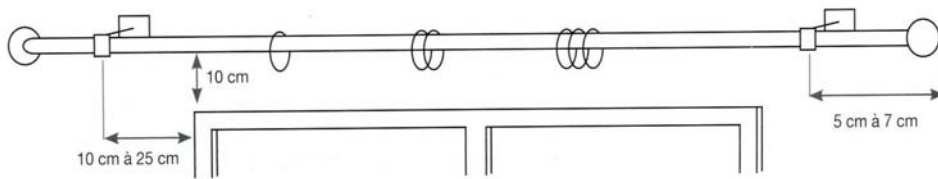


INSTALLING YOUR CURTAIN ROD

Attention it is imperative to use saw and ankles adapted to the materials of walls and ceilings

The length of the rod must be equal to the length of the window more 30 in 50 cm

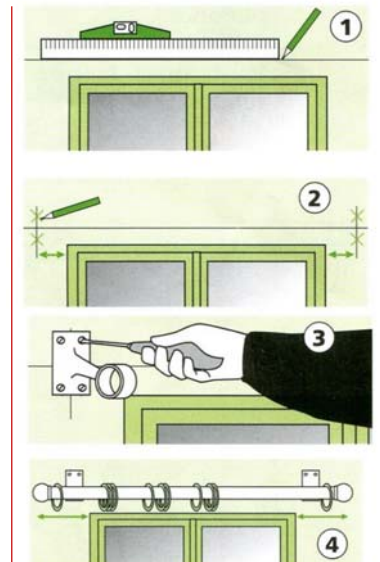
The rod must be placed at least in 10cm above the window
Brackets must be fixed at least in 10cm of the window
It is necessary to plan 3 brackets for rod from 2m50



THE VARIOUS SORTS OF INSTALLATION

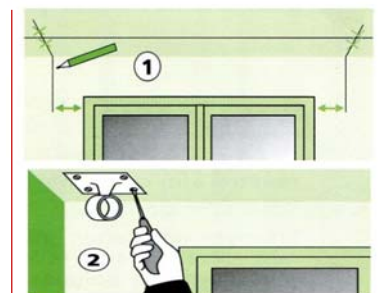
Installation in the wall :

- 1) with the ruler and the level, draw the horizontal line as high as pose of the rod,
- 2) mark the place of fixation of brackets at equal distance on each side with the window,
- 3) position brackets end fix,
- 4) place the rod by centering it with regard to the window



Installation in the ceiling :

- 1) locate on the ceiling the place of the rod and mark the place of brackets at equal distance on each side with the window,
- 2) position and fix brackets by verifying the centering with regard to the window.



Installation between two walls:

- 1) locate on the wall the place of brackets by leaving of the angle of the wall and the ceiling,
- 2) position and fix brackets.

